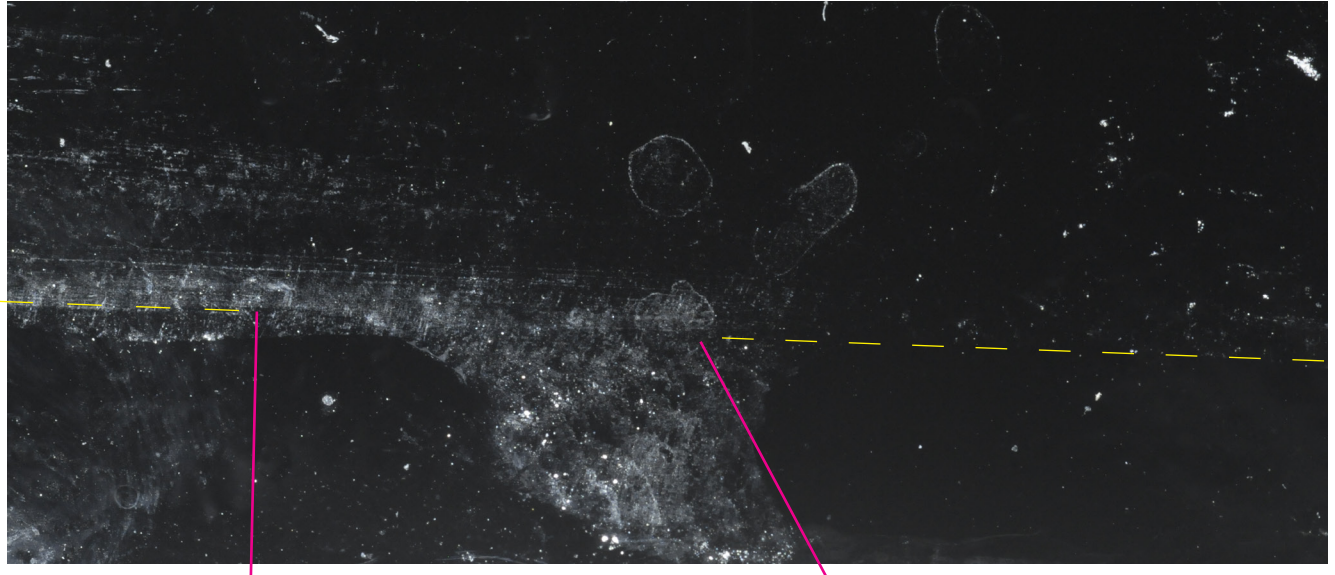
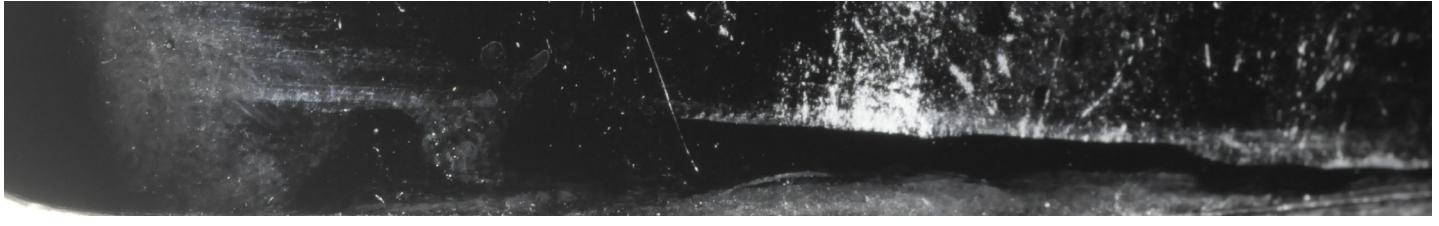
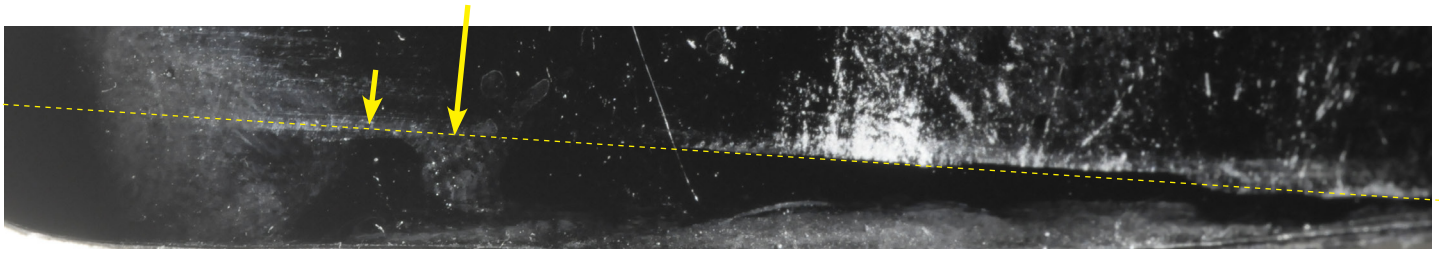


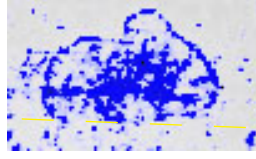
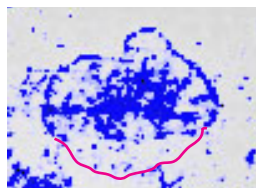
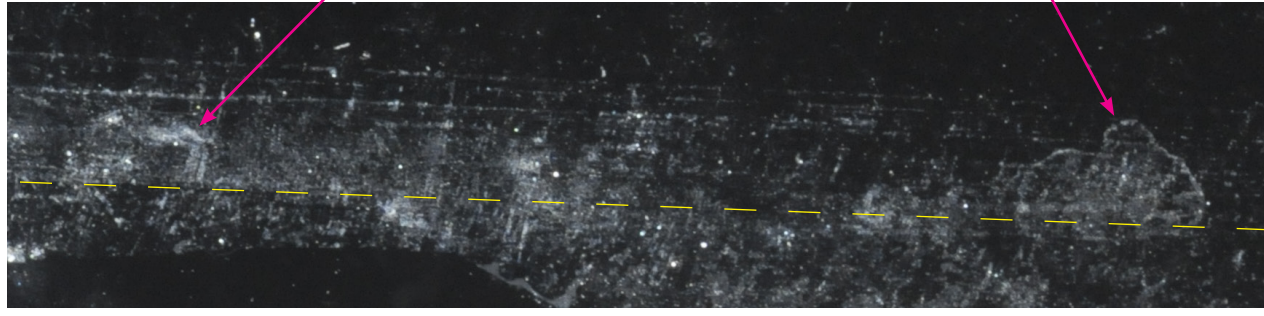
And a second partial drop?



Yellow line is lift line (F1's bottom line)

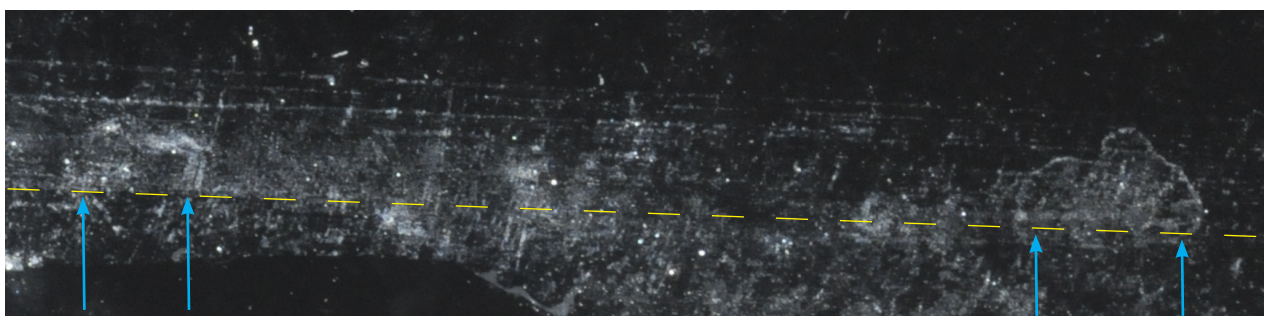
One cut off drop?

Another cut off drop?



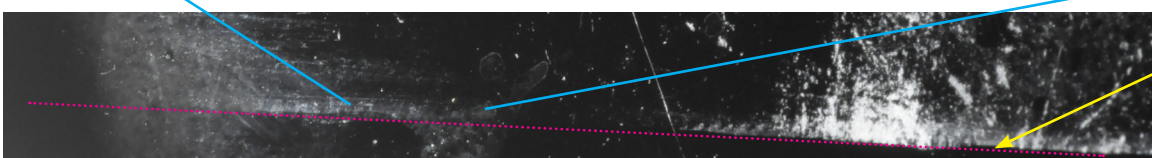
Outline clearly broken

Drops will not dry like this on the bottom edge of a glass



Powder below line possibly due to foline not pasted extremely well on plastic. Also more visible under enlargement. Actually minute.

Both clearly on lift line – outlines broken – drops incomplete



Both drops lie on lift line (just above pink line)